

COMMONGROUND

JANUARY 2025

NEW ASSOCIATES

Welcome!



Top row from left: **Holly Bristoll**, General Manager, GEM Service, Walbridge; **Brendan Jaquillard**, Tool Room Clerk; **Zack Poffenbaugh**, Project Engineer; both GEM Walbridge. Second row from left: **Clayton Recker**, Project Engineer; **Daniel Brower**, Preconstruction Associate, both RLI Walbridge; **Raymon Shimel**, Project Manager, GEM Walbridge. Third row from left: **Hank LaValley**, Project Engineer; **Shad Sundermeier**, Mechanical Buyer; **Brooklyn Pillar**, Project Engineer, all GEM Walbridge.

PROMOTIONS

Congratulations!

Chris Kaspar
Chief Financial Officer
RLI Walbridge



Holly Hutchison
Senior Safety Specialist
RLI Walbridge

INTERDEPENDABILITY: GEM ENERGY HELPS RLI SHINE

Solar experience scores big at St. Anthony's rehabilitation project

Toledo — The selection of the construction company to renovate the former St. Anthony Roman Catholic Church into a community recreation center came down to each company's solar energy experience.

Companies were rated on a scale of 1 to 10 with 10 being the top score. Two companies had no solar experience. Of the remaining three, only RLI scored a perfect 10 in solar, which was enough to award the renovation contract and have a solar canopy built across the street over parking, said RLI Business Development Manager **Alec Thompson**.



"That is a real differentiator for RLI versus many of our competitors," Thompson said. "They just don't offer what we have in solar."

VDC DEVELOPS USEFUL 'HOW DOES RL' VIDEOS

Here is a convenient way to show customers, others how we build

Construction can be complicated and it's not always easy to describe how we do what we do.

Instead of describing the process to a customer or other interested party, you can now show them, with the help of some short videos put together by the RLI VDC team. Videos showing building processes such as installing pre-cast panels, setting concrete wall forms, demolition, steel erection and others are available.

VDC Manager **Trent Mahaney** said there are now 16 videos on 13 topics and he expects the library to grow as associates

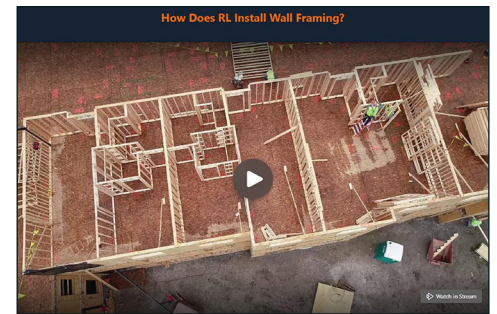
Commit to the success of others —
the Building Success Together Roadmap

GEM Energy Solar Business Development Manager **Andrew Whitehead** put together the solar part of the proposal to the Lucas County Land Bank, which owns the building. Solar energy will offset a portion of the building's power needs, which was important to the Land Bank, Whitehead said.

Many companies are seeking to do the same as a part of their own efforts to reduce their carbon footprint and become more environmentally responsible.

"Our solar experience surpasses our competitors and allows us to deliver clean energy solutions to our customers," Whitehead said.

It's also a way to help two RLG companies stand out from the competition.



This short video on the RLI intranet demonstrates how our trades workers install wall framing.

suggest construction video topics. Videos can be found under the *Project Management /VDC Sharepoint Site/How Does RL ...* tab. The "How Does RL ..." Videos are also housed on the Y Drive in the ZVideos folder for downloading.

RUDOLPH LIBBE INC
GEM INC
GEM ENERGY
LEHMAN DAMAN
RUDOLPH LIBBE PROPERTIES



SITE MANAGEMENT, MICHIGAN PLUG INTO HYDROGEN

Conversion projects help build RLG's portfolio of capabilities

Many automotive customers have strategic goals to reduce carbon emissions from their facilities. One way is to convert forklifts to hydrogen power.

New York-based Plug Power hired RLG's Site Management and Michigan Operations teams to install hydrogen systems, adding to the long list of capabilities we can offer our customers.

Hydrogen power is cleaner and eliminates the costs associated with handling and storing dangerous materials like battery acid. Hydrogen also allows forklifts to operate longer.

The joint RLG team is working to complete the conversion to hydrogen at two Michigan automotive facilities, with the first to be completed in the second quarter of 2024. The project made use of funding provided by the Inflation Reduction Act that Congress passed in 2022.

At each site there is an exterior equipment pad that houses an 18,000-gallon liquid hydrogen tank, storage tubes, compressors and vents. Hydrogen is run underground into various fueling stations inside each facility. The tanks are refueled by Plug Power trucks.

Most of the work had to be completed



Hydrogen-powered forklifts run cleaner and eliminate the costs associated with handling and storing dangerous materials like battery acid.

while existing production was running. Careful coordination among the team and plant officials ensured that the work did not interfere with plant operations.

The team: Project Manager **Bobby Tikkanen**; Estimator **Don McClelland**; Project Engineer **Max Fisher**; Civil Supervisor **Randy Urbanek**.

NEW WORK

Maumee, Ohio – RLI Special Accounts has been awarded a contract to build a new 12,143-square-foot garage at Spartan Chemical.

GEM has also been awarded contracts to provide steel fabrication, erection of pre-cast and steel, plumbing, HVAC and electrical work as part of the project. The work is scheduled to begin in February and be completed by early October.

The team: RLI: Special Accounts Group Manager **Nick Walby**; Account Manager **Eric Hinkle**; Superintendent **Zak Wilson**. GEM Project Managers: **Andy Moya** (Structural); **Stephanie Allen** (Plumbing/HVAC); **Dan Rork** (Electrical); Ironworker Superintendent **Chris Haeft**.

North Perry, Ohio – The Northeast Ohio office is replacing a 10-ton split air conditioning system at Vistra's Perry Nuclear Power Plant.

The work is expected to be finished in early February. The air conditioner services the nuclear plant's control room.

The team: Project Manager **Carmen Olivo**; Lead Technician **Craig Smith**.

Lima, Ohio – GEM is performing piping fabrication and installation, electrical and insulation work for chemical manufacturer Fort Amanda Specialties.

The company has identified a new way to manufacture biodegradable chelating agents. It selected GEM for its ability to quickly mobilize onsite and begin work.

This is Phase 1 of a three-phase project. Phase 1 is expected to be completed by the end of February.

The team: Project Manager **Jay Leininger**; Electrical Estimator **Timothy Wintersteller**; Insulation Estimator **James Cone**; Project Engineer **Nolan Cox**; Fabrication Shop Foreman **Terry Leppla**; Field Supervisor **Nick Berning**; Electrical Foreman **Alan Landwehr**; Insulator Foreman **Daniel Herr**; Safety Manager **Trevor Melton**; Shop QA/QC **Ralph Berry**; Field QA/QC **Ben Kettler**.

New Special Accounts Contracts for December

- **First Solar PGT-2**: Sign hydro and bollard – Lake Township, Ohio.
- **First Solar PGT-4 (GEM)**: Housekeeping pad – Perrysburg Township, Ohio.
- **Charter Steel (GEM)**: Sanitary repairs – Rising Sun, Ohio.
- **Hines-Owens Corning WHQ**: Curtainwall repair – Toledo.
- **Bowling Green City Schools**: Kenwood catch basin repairs – Bowling Green, Ohio.
- **George Gradel Co**: 2024 miscellaneous work – Oregon, Ohio.
- **Mercy Perrysburg**: Gamma knife removal.
- **Mercy Perrysburg**: Linac demolition.

- **Mercy Perrysburg**: Powerhouse ventilation.

New GEM Service Contracts

- **Tamarack Dairy Farms** – Newark, Ohio.
- **Tam-O-Shanter** – Sylvania, Ohio.
- **Landing Point Financial** – Avon, Ohio.
- **Rolled Alloys** – Maumee, Ohio.

FM 360

- **Fathom Digital Marketing** – Cleveland.

RETIREMENTS

Good luck to Jim Philo, Chris Stueve

Congratulations to RLI Vice President of Field Operations **Jim Philo** on his retirement after 35 years with the company. Philo started his RLI career in May 1989 and he has had a hand in just about every major RLI construction project since that time. His calm demeanor and expertise will be missed by everyone at all RLG companies.



Jim Philo

RLI Project Manager **Chris Stueve**



Chris Stueve

retired on Dec. 31 after 28 years with the company. Stueve, whose last project was overseeing the construction of Lake Elementary School, will be working on a part-time basis over the next few months.