

# COMMONGROUND

NOVEMBER 2022

## INTERDEPENDABILITY

### Build Ohio award-winning North Star BlueScope project a result of One Company Thinking

Remarkable things can happen with “One Company Thinking.”

On Nov. 11, something remarkable indeed happened: RLG won a Build Ohio award for its work on the “Aristotle” project,

North Star Bluescope’s 660,000-square-foot expansion of its steel-making facility in Delta, Ohio.



It is a great achievement and congratulations go out to every associate who

worked on the project, which wrapped up earlier this year.

Ohio Association of General Contractors judges were impressed with the project, particularly because it was technically challenging, was completed safely and operations continued during construction without missing a production day. The project boosted the plant’s production capacity by 40 percent.

*‘Each company that worked on this project made it successful. It is a true team effort that achieves the best result.’*

**-- RLI President Jeff Schaller**

RLI, which served as construction manager, provided laborers, carpenters, operators, brick masons and cement finishers for the project. Electricians, ironworkers, pipefitters, millwrights, insulators, sheet metal workers and boilermakers from GEM also were critical to the project and made it an undeniable success.



### Interdependability:

*Making the choice to work together and be the person others can count on to accomplish something even greater than what could be achieved working independently.*

**One Company Thinking**  
- the Building Success Together Roadmap

This is the 10th time RLG has won the Build Ohio award since 1993.

“This award really confirms what RLG and interdependability is all about. We count on associates across the companies to depend on each other to achieve excellent outcomes for our customers,” said RLI President **Jeff Schaller**.

GEM President **Steve Johnson** said a job of this size requires all associates to think about how their piece of the project affects the whole.

“Success happens when everyone is rowing in the same direction,” Johnson said.

“The coordination between RLI and GEM on a project of this magnitude was outstanding and the Build Ohio award bears that out.”

## IDEA LAB

### Out-of-date lighting

Recent power outages at RLG Walbridge locations revealed that there is still some out-of-date fluorescent lighting in our buildings.



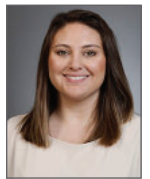
GEM Electrical Project Manager **Eric Fair** says if the lighting can be replaced, energy consumption and costs can be reduced. It’s the same work we do for customers with great results.

This is just one idea in the works in the Idea Lab pipeline. Have an idea? Submit it through the Viima link on the GEM or RLI intranet home pages.

No Viima account? Contact **Jennifer LaCourse** at [jennifer.lacourse@rlgbuilds.com](mailto:jennifer.lacourse@rlgbuilds.com). There are no limits, parameters or end dates. Every idea has value!

## PROMOTIONS

### Congratulations!



The Northeast Ohio Regional Office announced the following promotions, clockwise from top left: **Stan Piecuch**, Field Operations Manager; **Brandon Heidecker**, Regional Safety Manager; **Gabrielle Delesk**, Account Manager; **Christy Kovacs**, Account Manager and **Nick Horton**, Account Manager.

**RUDOLPH LIBBE INC**  
**GEM INC**  
**GEM ENERGY**  
**LEHMAN DAMAN**  
**RUDOLPH LIBBE PROPERTIES**



## NEW WORK

**Perrysburg** – Earthwork is underway on First Solar’s new facility, PGT-04.

The first 300,000 square feet of the 1.4 million-square-foot facility is expected to be completed in Fall 2023, with the remainder scheduled for completion in March 2024.

The team: Project Executive **Mike Mutscheller**; Senior Preconstruction Leader **Thomas Schneider**; Preconstruction Services Manager **Troy Fritch**; Preconstruction Services: **Travis Maag**; Project Manager **Dave Crozier**; Field Operations Superintendent **Ryan Zellner**.

**Akron** – GEM will be working on the historic former Goodyear airdock.

The airdock is now owned by LTA Research and Exploration of California, which is testing and building airships. GEM will remove and reinstall the trucks for two of the movable hangar doors, each of which weigh 650 tons.

The hangar was built in 1929 and can hold nearly seven football fields. The work is expected to begin in January 2024.

The team: Project Manager **Ron DiPerna**; Superintendent **Bailey Bejek**.

**Delta** – The solid relationship RLI has with North Star BlueScope has led to additional work at the company’s newly acquired recycling facility.

Phase 1 of the project is to demolish existing structures and build a new entrance drive and parking lots at the former Metal X Scrap facility.

GEM will self-perform site lighting, with the potential for additional electrical, structural and mechanical work.

The team: Project Manager: **Will Conser**; Preconstruction Services: **Travis Maag**.

**Cleveland** – RLG will disconnect and remove four existing natural gas annealing burners and replace them with two new units at Charter Steel.

RLI will modify existing concrete abutments for new burner clearances. GEM ironworkers will fabricate a new steel structure support frame for the burners. GEM millwrights will remove and install the burners while GEM pipefitters will install and modify the natural gas piping.

The team: Project Manager **Dominic Vecchio**; Lead Project Foreman **Sean Williamson**; Millwright Project Manager **Ron DiPerna**; Ironworkers Project Manager **Luke Hauser**; Civil Project Manager **Amber Hagey**; Regional Safety Manager **Brandon Heidecker**.

### THANKS FOR THE LEADS!

Every associate who reports a new business lead is entered into a drawing for \$100 in GEM and RLI merchandise. The next drawing is in January for leads generated in October, November and December.

New Leads: **Mike Mutscheller**  
**Matt Ohlrich**  
Report your leads to:

RLI - **Shannon Deppen**, ext. 3005, [Shannon.Deppen@rlgbuilds.com](mailto:Shannon.Deppen@rlgbuilds.com)  
GEM - **Elizabeth Hancock**, ext.2603, [Elizabeth.Hancock@rlgbuilds.com](mailto:Elizabeth.Hancock@rlgbuilds.com)

## WELCOME TO RLG!



**Abigail Paquin**  
Recruiter  
Human Resources  
RLG  
Walbridge



**Jason Scott**  
Safety Specialist  
GEM Inc.  
Walbridge



**Johnathon Moore**  
Assistant Project Engineer  
Site Management  
RLG  
Walbridge



**Tiffani Hobbs**  
Accounts Payable  
Accounting  
RLG  
Walbridge



**Richard Cheney**  
Co-op  
GEM  
Energy  
Walbridge-



**Joshua Langenkamp**  
Co-op  
Facility Management  
GEM Inc.  
Walbridge

## 'TIS THE SEASON



**Toledo** -- It's beginning to look like Christmas as GEM associates **Gabe Salenbien**, **Tim Park**, **Tanner Holke** and **Nick Delauter** hang Christmas lights on businesses along St. Clair Street.

## M&M BREAKS GROUND



**Lordstown** -- RLG broke ground on the M&M Industries plastic injection plant warehouse addition in November. The Northeastern Ohio plant makes pails for many different uses. The addition is the fourth major project M&M has undertaken with RLG.