

SAFETY MATTERS

JANUARY/FEBRUARY 2019

‘WE’RE LOOKING OUT FOR EVERYBODY’

A GEM boilermaker’s quick action keeps another worker safe

Lima – Earlier this year, another contractor’s employee had been cleaning out a tank at Nutrien. In over two hours, he hadn’t taken a drink of water, even though temperatures inside the tank had topped 110 degrees Fahrenheit.

Todd Thober, GEM boilermaker, was hole-watching and feeling increasingly concerned.

Thober offered water to the contractor’s other workers, but the worker in the tank turned him down. Thober made a decision.

“It got to the point where I was worried that he was going to pass out. I told him

he had to come out of the hole,” Thober says. “He was a little upset, but when he pulled off his acid suit, he was soaked with sweat. Even his boots were wet.”

The worker was given water and was sent home as a precaution. Nutrien was so grateful to Thober for preventing a

“GEM and RLI, with our safety culture, we don’t want to let anyone get hurt.”

Todd Thober
GEM boilermaker



potential incident that they selected him for their Safety, Health, Environment (SHE) Award for November. He received a Nutrien golf shirt, a gift card and a letter from **Nutrien General Manager Todd Sutton**.

That’s the RLG safety culture, says **Justin McGrady, GEM project engineer**, who works with Thober in Lima. “All of us, we’re looking out for everybody. They don’t have to be your coworkers. It’s everybody on the jobsite.”

“We all try, all my guys, to be each other’s protectors,” Thober says. “GEM and RLI, with our safety culture, we don’t want to let anyone get hurt.”

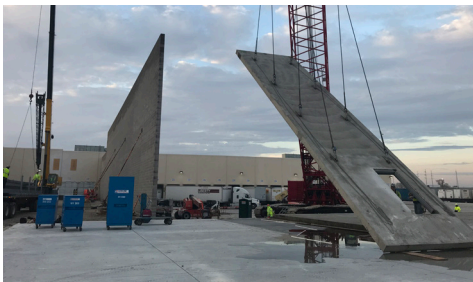
WORKING SAFELY AT WALGREENS

Meeting challenges - from ongoing customer operations to rough weather

Walgreens Distribution Center, Perrysburg – An operating warehouse, high winds and heavy rain are just a few of the safety challenges the RLG team has met at Walgreens.

The customer’s active warehouse

Truck traffic is heavy near our work areas. To separate our crews from the traffic, RLI barricaded routes and erected concrete barriers.



Tilt-up in progress at Walgreens’ 395,000-square-foot expansion.

“A key factor in our ability to stay safe and on schedule is the fact that RLG is performing most of the work,” says **Eric Fair, GEM project manager**.

“GEM and RLI leadership on site and in the office have done a good job working with the construction manager to mitigate issues,” Fair adds. “RLG’s field personnel have performed very well in the face of shifting weather and design changes.”

Tilt-up safety

Erecting the 179 tilt-up panels was challenging with the tallest at 56 feet and 100,000 pounds, and the heaviest at over 140,000 pounds. Before starting work, RLI and GEM reviewed tilt-up layouts. Pre-installation meetings helped the team select an appropriately sized crane to lift the heavier panels.

GEM and RLI monitored weather forecasts, rescheduling tilt-up work when high winds made it unsafe.

“GEM and RLI leadership on site and in the office have done a good job working with the construction manager to mitigate issues.”

Eric Fair, GEM project manager

“GEM made up the time lost,” says **Rick Turner, RLI superintendent**. “They took advantage of good weather by working 10-hour days and did way more than they expected to do each day. We planned for 10 tilt-up panels per day. On their best day, they erected 16 in only seven hours before shutting down due to high winds. They would have had 23 or more done if the wind didn’t pick up.”

RUDOLPH LIBBE INC
GEM INC
GEM ENERGY
LEHMAN DAMAN
RUDOLPH LIBBE PROPERTIES

 **GEM INC**
RUDOLPH LIBBE GROUP

REPORT EVERY NEAR-MISS AND GOOD CATCH

Every task is an opportunity to help us all get better at safety

Reporting good catches and near misses can prevent incidents, injuries and even save lives.

Here's an example from a construction industry blog post:

A worker using a GFCI-protected extension cord pushed the reset button several times to make the cord work. When he finished his task, he returned the cord to the tool room.

A few days later, another employee used the same cord and noticed the breaker was warm. He also had to reset the cord, but after he finished the task, he too returned the cord to the tool room.

When a third employee plugged in the cord a few days later, it shocked him, causing a flash burn that killed him.

There had been two opportunities to prevent the tragedy.

Near misses and good catches are warn-

ing signs that a piece of equipment, a policy or a procedure are creating a safety hazard.

Here's why we need to report every near miss and good catch:

- We can properly investigate how and why each incident occurred.
- We'll learn from each good catch and near miss, and become better at eliminating the hazards that led to them.

Working together for the first time?
Performing an unfamiliar task?

Here are a few tips for working safely as a team:

- Plan tasks in detail before you start. Consider everything that could go wrong and how you'll work safely. Make sure each of you knows what the other is doing and when.
- Use verbal and non-verbal signals.
- If you're experienced, be a mentor for less experienced crew members.

FIND IT-FIX IT UPS ITS GAME!

As of January 1, Find It-Fix It is changing to better recognize associates for participating.

Cash for monthly 'Best Find' winners

Each month, GEM will contribute \$2 for each submission to a "pot" that will be divided equally among that month's Best Find winners.

For example, if there are 350 submissions, the pot will be \$700. If three best finds are selected, each winner receives \$233.33. Each winner will always receive at least \$25.

Random winners

Three random winners will each receive a \$25 gas card.

First submissions

You'll still receive a \$10 food gift card for your first submission each month.

2018 SAFETY AUDIT SUMMARY

GEM compliance tops 98 percent on over 59,000 observations

Observations	In Compliance	Correction Required
Hard hat	10,667	54
Eye protection	11,331	51
Pretask planner	3,272	55
6-foot fall protection	2,039	18
Ladder use	1,155	21
Scaffolds/aerial lifts	1,818	24
Excavation/shoring	236	2
Housekeeping/ work environment	2,227	227
Lockout/tagout	1,590	17
Electrical cords (GFC)	3,036	77
Barricades/site protection	1,964	47
Respiratory protection	438	10

Observations	In Compliance	Correction Required
Fire protection	2,357	58
Flammable liquids gas cylinders	751	11
Tools/equipment	4,050	42
Welding/cutting/burning	1,160	15
Confined space	143	3
Mobile equipment	1,222	10
Lifting/rigging	643	16
Glove use	8,658	31
Permits	574	7
Other	215	32
Total observations	59,546	828
% Observations in compliance	98.63 percent	