

SAFETY MATTERS

JANUARY/FEBRUARY 2020

PREPLANNING PROVES ITS IMPORTANCE

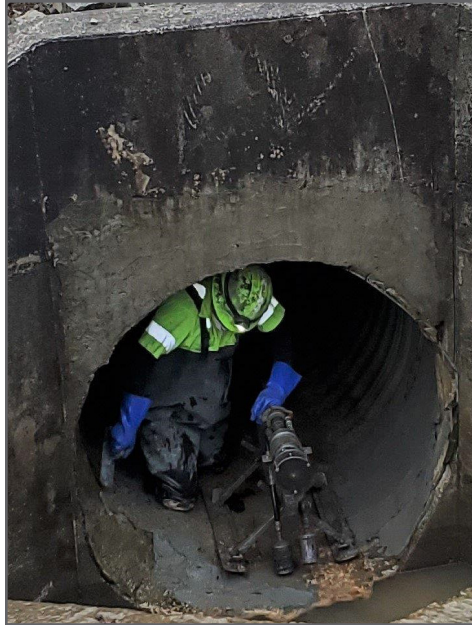
Confirming the facts prevents incidents

La-Z-Boy, Dayton, Tenn. - Preplanning prevented a potentially serious incident when the RLI team needed to replace a 60-inch storm line.

Drawings, dating back to the 1980s, showed that the storm line was buried 10-12 feet deep and located under a nearby road at least 45-50 feet from an existing La-Z-Boy manufacturing facility.

However, the drawings were inaccurate. The pipe actually runs about 8 feet from the existing facility - and excavation could have easily destabilized the building.

With thorough preplanning, the RLI team caught the issue early by confirming the storm line's location with pot holes and GPRS.



Spin-casting in process on the storm line

After identifying the issue, RLI and the contractor performing the work began seeking a new solution.

They needed a less intrusive process that would not destabilize the building, which rests on a slab with no foundations.

Ultimately, they decided to repair the line using "spin casting," which creates a fully structural pipe within an existing pipe with no need to dig and replace. The spin casting solution saved time, money and did not interrupt work in the nearby La-Z-Boy manufacturing facility.

STRONG COMMUNICATION

Using the expertise and input of every team

North Star BlueScope Steel, Delta, Ohio - RLI site crews had worked on the fire line system for several months, so it would have been easy to assume all lines were inactive.

Many utilities run north-south in the area around the proposed H pile installation, and all had been identified with pot holes before work began.

However, a utility coordination meeting provided an important update that changed the plan. Another fire line - running east/west through the area and marked for demolition - was still active.

Then the surveying crew confirmed that one of the proposed H pile locations was directly over the active fire line.

RLI and the subcontractor revised the plan and chose a new and safe location for the H pile.

"It's all about preplanning. Before we started work, we had to know exactly where the line was located."

- Kenny Katschke, RLI superintendent

Identifying and eliminating the hazard was "all about preplanning," says **Kenny Katschke**, superintendent. "Before we started work, we had to know exactly where the line was located."

Strong communication among all team members is key to identifying and eliminating hazards.

"In our first pre-job meeting with the subcontractor, the line was incorrectly assumed to be dead," says **Corbin Lewis**, project manager.

"The active line was identified before it could become a major issue."

- Corbin Lewis, RLI project manager

"But in our utility coordination meeting, we received updated information from other team members that the fireline was active," he adds.

"The active line was identified before it could become a major issue."

RUDOLPH LIBBE INC
GEM INC
GEM ENERGY
LEHMAN DAMAN
RUDOLPH LIBBE PROPERTIES

 **RUDOLPH LIBBE INC**
RUDOLPH LIBBE GROUP

BEST FINDS OF 2019!

Our winners eliminated electrical and heavy equipment fall hazards



Kenny Katschke Jr.
with Jim Philo

RLI received 4,631 Find It-Fix It submissions last year.

Thank you to everyone who reported finds, and congratulations to the 2019 winners of the best finds!

1st Place: 3 days off with pay
Kenny Katschke Jr.

While excavating for bollard posts, **Kenny Katschke Jr.** noticed number 8 stone in

A GOOD SAMARITAN

Christian Baldenegro takes all the right steps in an emergency

You never know when someone will need your help.

Christian Baldenegro, GEM facility management service technician, was driving between jobsites in early January when he passed a stopped car at the roadside.

The brake lights were on and the passenger side tires were resting over the curb.

Concerned, he circled back and parked behind the car to check the occupants.

Both driver and passenger appeared unconscious and didn't respond when he knocked on the vehicle window.

Baldenegro took all the essential steps in an emergency. He called 911. To secure



Christian Baldenegro

the car, he opened the unlocked passenger door and climbed across the occupants to put the car in park and turn off the ignition. Then he began trying to wake the men.

Another driver stopped to help and after seeing the condition of the men, she offered Narcan.

"With all the driving I do, I see a lot of stopped cars and I try to help as much as I can," Baldenegro says.

Both men began regaining consciousness as paramedics arrived.

"I'm glad I was there, and I'm glad that lady was there to help. Everybody else just drove past those guys." Baldenegro said.

the ground - a sign of backfill and a potential conduit. He stopped digging and called the electricians, who identified that a temporary electrical line was directly under the excavation. All digging was stopped until the line was de-energized.



Jim Tripp

2nd Place: 2 days off with pay
Jim Tripp (GEM)

After applying lockout/tagout, **Jim Tripp** checked for power and found the circuit was still energized. He stopped work and notified the owner to identify and de-energize the source, then verified that it was de-energized before resuming work.

3rd Place: 1 day off with pay
Dustin Archer

As a 125-foot JLG extendable boom lift was going up, **Dustin Archer** noticed that

one of the tires was about six inches off the ground. He called to the workers in the JLG, they brought the lift down and found it was malfunctioning.

Random winners:
4 hours off with pay

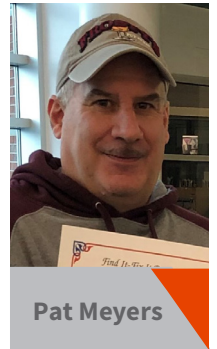
Pat Meyers
Jenny Reinhart
Lewis Thrash Jr.



Jenny Reinhart



Lewis Thrash Jr.



Pat Meyers

"I'm glad I was there, and I'm glad that lady was there to help. Everybody else just drove past those guys."

- Christian Baldenegro
GEM facility management service technician

NW OHIO SAFETY & HEALTH DAY 2020

May 20, 2020
Owens Community College
(Audio/Visual Classroom Center)
30335 Oregon Rd.
Perrysburg, OH 43551

For details or to register, go to safetyandhealthday.com