

SAFETY MATTERS

NOVEMBER/DECEMBER 2023

INTERDEPENDABILITY: RLI, GEM TEAM UP TO IMPROVE CUSTOMER'S SAFETY

Accident led management to ask for our help to protect its workers

A large, longtime RLG customer was under the gun to improve its safety following a September incident where one of its workers suffered a serious injury.



A team consisting of the customer, OSHA and a third-party consultant held safety walkthroughs

and produced a report that identified more than 300 areas where safety needed to be addressed. The customer knew it needed outside help from a contractor that had a firm grasp on safety in an industrial setting.

It turned to RLI, which was already managing unrelated projects in the facility, and asked for its help in immediately improving safety.

“They were in desperate need,” RLI

ST. VINCENT'S SAFETY STANDDOWN: COMMUNICATION IS CRITICAL TO SUCCESS

New generator building project needs all parties to work together

Toledo — Completing a complex project while working around the customer's daily operations requires reassessing the safety stance as needed.

RLG is constructing a new generator building at Mercy St. Vincent Medical Center. In early December, RLG and Mercy conducted a Safety Standdown with all construction trades and facility staff.

As conditions changed, it was noted that St. Vincent's personnel needed safe access to construction work zones to read gauges and manage the facility while construction personnel

**Commit to the success of others —
the Building Success Together Roadmap**

Project Manager **Nick Adams** recalled. “When something like that happens, management kind of goes into ‘shock mode’.”

Hazards were found in three main areas:

- Exposed conveyor parts that could cause bodily harm.
- Steel planks in walkways above the production floor that had holes in them.
- Emergency power shutoffs were in hard-to-reach places that would have taken a long time to get to.

Adams didn't need to look far for expert help. GEM was there early the day after the customer asked for assistance.

The GEM team led by Millwright Project Manager **Jim Bronson** and Electrical Project Manager **Eric Fair** responded by



GEM associates fabricated hundreds of sections of guarding to protect workers.

addressing hundreds of safety issues, including many they discovered on their own and through discussions with the customer's employees. They added hundreds of sections of guarding on conveyors belts, fixed the holes in the steel walkways above the plant floor, and changed the position of many of the emergency power cutoff switches to make them more accessible.

The combined RLI/GEM team finished the upgrades within three weeks and received a grateful “Thank You” from the customer.



St. Vincent's staff needed safe access to construction zones to read gauges and manage the facility.

are working on adjacent high-pressure boilers, steam turbines and facility infrastructure.

The standdown reviewed all safety protocols, coordinated the remaining work and improved communications. As

a result, additional PPE is now available to all facility personnel so that if they need to enter a work zone, they have the resources and awareness training to safely complete their task. Conversely, construction personnel are now better informed of the hazards in the operating plant.

Lessons to share from this experience: Communication is critical. Do not hesitate to reach out to the customer and address issues head-on. We are in “their house” and need to protect their people and their property, too.

We are stronger and safer when we stand down together.



**RUDOLPH
LIBBE
GROUP**

**RUDOLPH LIBBE INC
GEM INC
GEM ENERGY
RUDOLPH LIBBE PROPERTIES**

THANK YOU FOR WORKING SAFELY



RLI laborers backfill pipe during construction of the Rolled Alloys facility in Monclova Township. The project is expected to be completed in August 2024.

FIFI REPORT

Report your worksite, home safety finds to keep all out of danger

Unsafe act or condition: Scrappers were rummaging through dumpsters without PPE. One jumped from one dumpster to the other.

Solution: Onsite safety was notified.

Unsafe act or condition: Sparks from a grinder were landing on generator gas cans 8 feet away.

Solution: An associate let the grinder operator know and moved the gas cans.

Unsafe act or condition: A subcontractor was cutting steel without a faceshield and a guard.

Solution: An associate stopped the work and obtained a different angle grinder and a faceshield for him.

Unsafe act or condition: A demolition subcontractor was using an excavator with a pincher to crush and drop big pieces of machinery 15 feet from where pipefitters were working with only a tarp between them.

Solution: The pipefitters were stopped from working while the associate called safety and asked the subcontractor to move 50 feet to the other side of the work area so if demolition material fell it would not crush pipefitters.

Unsafe act or condition: An associate was in a scissor lift, standing on the mid-rail and working overhead without being tied off.

Solution: Another associate got his attention, stopped the work and told him to come down and tie off to the lift. He was also told to hang a D-ring and retractable from the steel to climb onto the mid-rail to continue the work.

‘THE BARN’ GETS A MAKEOVER AT RLI

Lighting, easier access to tools and supplies among safety upgrades

“The Barn,” the red building on Latcha Road adjacent to RLG headquarters, is where heavy equipment maintenance is performed when not done in the field.

Over the decades, diesel particulate accumulated on the walls. The fluorescent lighting was outdated and insufficient. Supplies and equipment piled up. Then there were the beady-eyed varmints peeking out from holes in the walls and in the dirt floor.

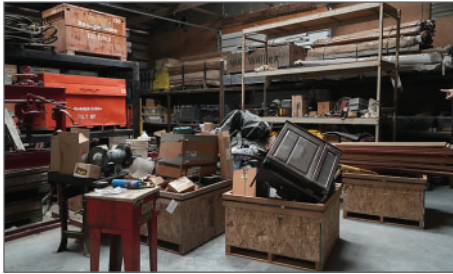
The building was long overdue for a refresh, said RLI Yard Manager **Ryan Euler**.

“It was a 30-year collection of stuff,” Euler said as he walked through the storage area containing bins that held parts of machinery from the past. “Everything will be organized once we’re done here.”

The process started two years ago



New LED lighting brightens up the work area. The worker sprayed down the walls after scrubbing to remove years of diesel soot that had built up.



The items in the bins will be scrapped or otherwise disposed of, giving workers more room to operate.

when concrete floors were poured. Holes in the attic walls, where raccoons sometimes peer out, are being fixed. Concrete “rat walls” were added to help keep those rodents outside.

“We’re making it varmint-proof,” Euler said.

Drainage has been added so the constant puddles in the back shop are now a past nuisance. Workers from Lakeside Interior Contractors were recently in the barn, scrubbing the walls to remove stubborn diesel soot.

Lighting and making it easier to work were at the top of the safety improvements. The yellowish fluorescent lighting has been updated with bright LED lighting. A garage door that had been closed for decades will be opened to make it easier to get tools and parts. More shelves will be added and unnecessary items will be removed.

TOOLS: LADDER CRANE HELPS AVOID BACK STRAIN

Attachable winch helps workers move awkward, heavy items

SCENARIO: An RLG associate needs to lift something heavy at an awkward angle.

SOLUTION: The Ladder Crane. This tool allows for a heavy item to be lifted safely — and not at an awkward angle where one misstep by a worker lifting the item on their own might cause an injury.

The Ladder Crane saves time and effort. For instance, GEM Service uses the Ladder Crane to remove and install 100-pound compressor replacements, and makes it



easier to braze the lines. The equipment can also be used to haul a variety of items — condensers, tools, supplies — up to a roof. Eliminating unnecessary multiple up-and-down ladder trips is one way to greatly improve safety.